

## 2-Door Base System

### Overview

The goEntry™ 2-door base system is the starting point for any goEntry 3.0 system. Pick your choice of base system, with or without readers & credentials, and then add door interface modules, I/O expansion, readers and credentials to build-up a complete access control system. Add DVRs and cameras for an integrated access/video solution.

The goEntry controller has a webserver onboard so there is no need to install application software on a workstation. In addition, goEntry features an onboard database, so there is no need to install a dedicated database or communications server. A free iPad® app enables Installers to remotely administer or diagnose the system and also delivers on-the-go information to End Users.

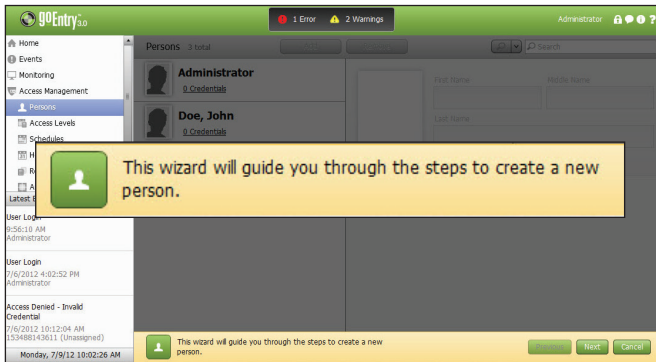
In future releases, the goEntry controller and downstream door hardware will be able to be re-purposed to become Lenel® Security Series hardware, and an integral part of a full OnGuard® deployment to connect multiple sites. As Lenel builds-out the goEntry platform, Lenel will deliver a unique hybrid solution for customers who want a mix of de-centralized, web-friendly management of some sites, along with powerful client/server centralized administration of other sites – and exchange of data in-between.



### STANDARD FEATURES

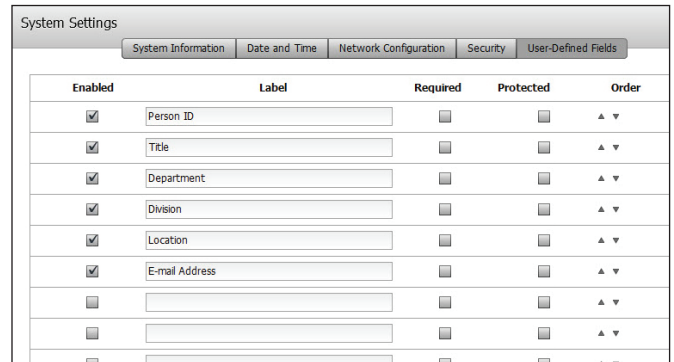
- Web-based application without additional software or licensing
- Seamlessly links video to access control system
- Video can be viewed and controlled via browser
- Monitor and control up to 132 inputs and 66 outputs
- iPad app allows remote access and monitoring
- Simple system installation requires no special training
- User-friendly interface and built-in configuration wizards
- Hardware discovery on initial and subsequent hardware installations
- Utility for Import/Export of cardholders
- FCC, Class A and CE compliant
- Supports up to 10,000 persons and 10,000 credentials with 5 credentials per person
- Supports up to 64 access levels with 8 levels of access per credential
- Supports up to 64 schedules with 6 intervals per schedule
- Supports up to 64 reader groups, 32 operator roles, 8 free configurable card formats, and 64 readers or doors in a flexible configuration
- Supports DVRs: TVR 10 and TVR 31 with a maximum of 64 cameras and maximum 4 DVRs

## Key Functions



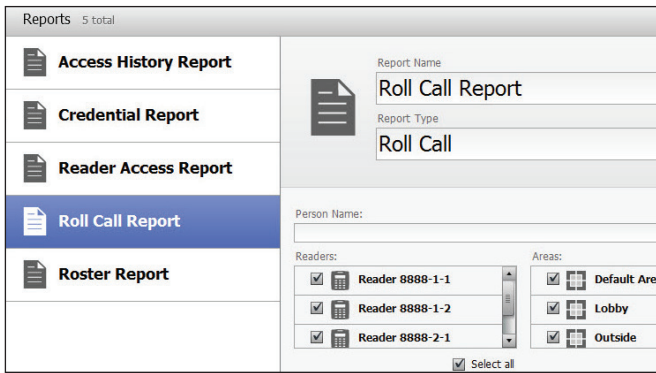
### Installation/Ease-of-Use Features

Wizards walk users through installation and other common tasks, while Tool Tips provide descriptions of system features.



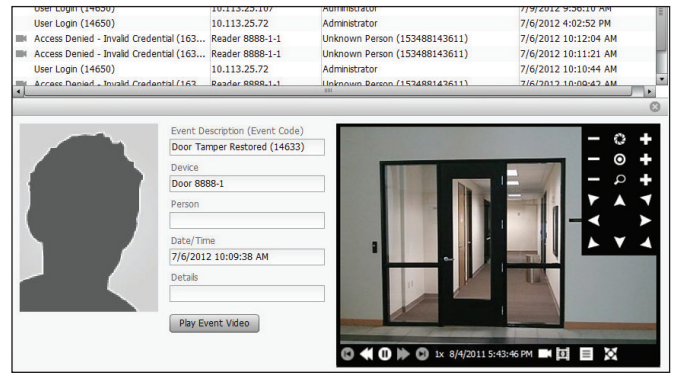
### Customizable Configuration

Cardholder database offers customized fields to track and generate reports.



### Reports

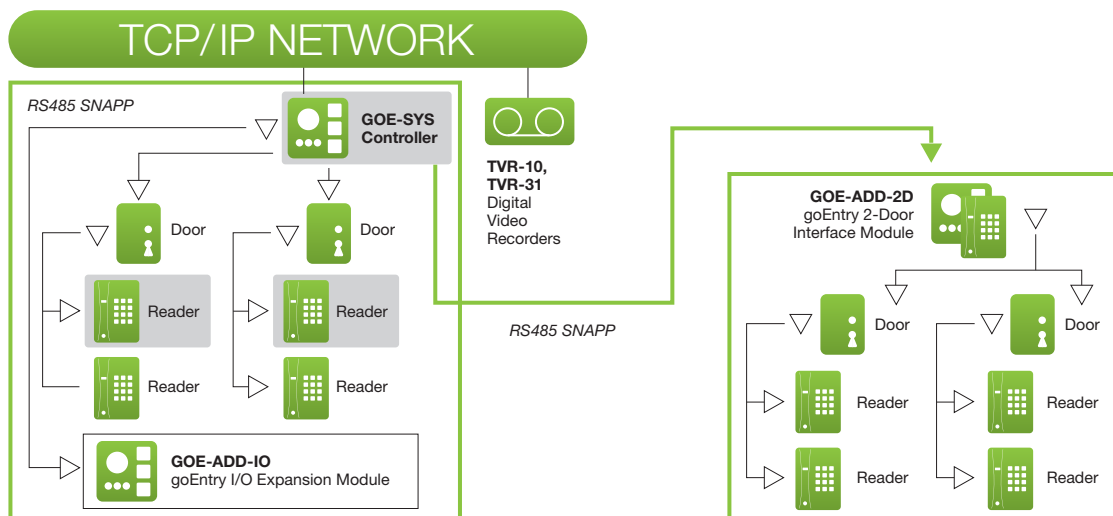
Easily customize reports and filter based on individuals, locations or times.



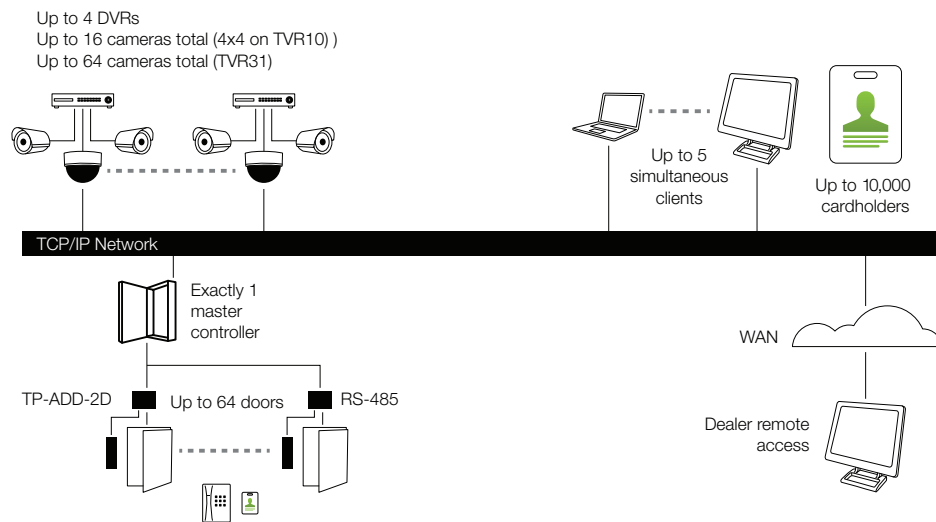
### Seamless Video Integration

Associate and control video related to access control system events.

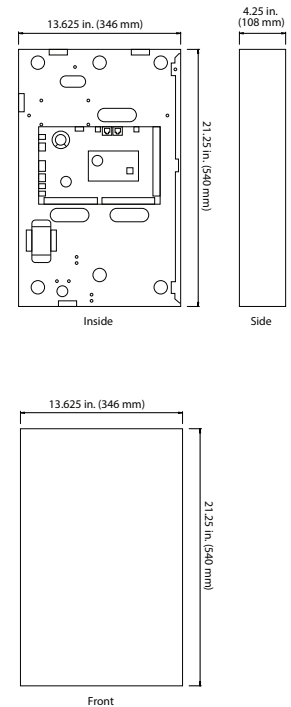
## System Diagram



## Application Drawing



## Dimensional Diagram



## Specifications

|                                   |   |
|-----------------------------------|---|
| Cardholders and Credentials       | Up to 10,000 total (up to 5 credentials per cardholder)   |
| Doors and Readers                 | Expandable to 64 doors or 64 readers  |
| Access Levels                     | 64 total (up to 8 per credential)   |
| Anti-Passback                     | Up to 64 areas (hard/soft modes configurable per reader)  |
| Event History                     | 65,000 historical events  |
| Schedules and Holidays            | 64 schedules/255 holidays   |
| Enclosure Size (WxHxD)            | 21-1/4 x 13-5/8 x 4-1/4 in.   |
| Certifications                    | UL, RoHS, CE  |
| PC Requirements                   | 2.8 GHz processor Intel Pentium 4<br>1 GB of memory<br>512 MB video card<br>1 GB free disk space<br>10/100 Ethernet Network Interface Card<br>1280 x 1024 screen resolution |
| Video Performance                 | Directly depends on the available RAM and the processor   |
| Software Requirements             | Microsoft Windows XP SP3 32-bit,<br>or Microsoft Windows 7 32- and 64-bit<br>Bonjour Print Services<br>.NET 4.0 framework<br>Adobe Flash plug-in 10.6+                      |
| Supported Readers                 | Supports Wiegand Data1/Data0  |
| Typical Credential Technologies   | 125 kHz<br>13.56 MHz (ISO 15693 & 14443A, B)  |
| Typical Proximity Cards           | Interlogix Proximity<br>HID® Proximity<br>HID® Proximity Corp. 1000   |
| Typical Smart Cards               | MIFARE® (ISO 14443A) card serial number (CSN)<br>MIFARE®/DESFIRE® CSN<br>Vicinity (ISO 15693) CSN<br>HID® iCLASS® CSN   |
| Supported Digital Video Recorders | TruVision™ DVR 10<br>TruVision™ DVR 30  |
| Supported Browsers                | IE 7,8,9<br>Safari 5.1.7<br>Chrome 12<br>Firefox 12.0   |

## Ordering Information

| Base System   |   |
|---|---|
| GOE-SYS-2D  | goEntry 2-door base system. Consists of goEntry system controller mounted in a UL-approved enclosure. Integrated power supply with backup battery charging capabilities. RoHS and UL 294 certified.                   |
| GOE-SYS-2D2R  | goEntry 2-door base system with readers. Consists of a GOE-SYS-2D bundled w/two T-100 Proximity readers and 5 HID Prox keyfob credentials.  |
| GOE-SYS-BRD   | goEntry system controller. For spare parts only.  |
| <i>Note: Backup battery must be purchased separately.</i> |   |
| Add-ons   |   |
| GOE-ADD-2D  | goEntry 2-door add-on. Consists of a goEntry 2-door interface module installed in UL listed enclosure w/ 4 AMP power supply.  |
| GOE-ADD-2D2R  | goEntry 2-door add-on with readers. Consists of a GOE-ADD-2D bundled w/two T-100 Proximity readers.   |
| GOE-ADD-2D-BRD  | goEntry 2-door interface module. Board only.  |
| GOE-ADD-IO  | goEntry I/O expansion add-on. Consists of a goEntry 16 input, 8 output I/O expansion module installed in a UL listed enclosure w/ 4 AMP power supply.   |
| GOE-ADD-IO-BRD  | goEntry I/O expansion module. Board(s) only. 16 inputs and 8 relays output (consists of 2 separate, but interconnected boards). For spare parts or for installation into an existing GOE-SYS-2D.                      |
| Readers   |   |
| 430222001/2/3   | T-100 - Casi Proximity (ProxLite, Entree Prox) and HID Proximity, Wiegand output only, Mini Mullion mount, 125 kHz, Light Gray/Charcoal/Black, 18"/45.7 cm pigtail wire   |
| 430222004/5/6   | T-100 - Casi Proximity (ProxLite, Entree Prox) and HID Proximity, Wiegand output only, Mini Mullion mount, 125 kHz, Light Gray/Charcoal/Black, 84"/214 cm pigtail wire  |
| 430223001/2/3   | T-200 - MIFARE® (ISO14443A) and Vicinity (ISO15693), Wiegand output only, Mini Mullion mount, 13.65 MHz, Light Gray/Charcoal/Black, 18"/45.7 cm pigtail wire  |
| 430223004/5/6   | T-200 - MIFARE® (ISO14443A) and Vicinity (ISO15693), Wiegand output only, Mini Mullion mount, 13.65 MHz, Light Gray/Charcoal/Black, 84"/214 cm pigtail wire   |
| 430209004/5/6   | T-500W - Casi Proximity, MIFARE® (ISO14443A) and Vicinity (ISO15693), HID proximity & Corp 1000, Wiegand or F/2F output*, Mullion Mount, Gray/Charcoal/Black, 18" pigtail wire  |
| 430210004/5/6   | T-520W - Casi Proximity, MIFARE® (ISO14443A) and Vicinity (ISO15693), HID proximity & Corp 1000, Wiegand or F/2F output*, Single-width USA electrical box mount, Gray/Charcoal/Black, 18" pigtail wire                |
| 430211004/5/6   | T-525W - Casi Proximity, MIFARE® (ISO14443A) and Vicinity (ISO15693), HID proximity & Corp 1000, Wiegand or F/2F output*, 12-key keypad, single-width USA electrical box mount, Gray/Charcoal/Black, 18" pigtail wire |
| <i>*goEntry 3.0 supports Wiegand only output.</i>         |   |
| Accessories   |   |
| GOE-RDR-LRN   | Dual frequency enrollment reader  |
| Credentials   |   |
| GOE-PRX-CLAM-50PK   | HID Proxcard II cards, clamshell design, 50 pack  |
| GOE-PRX-KF-50PK   | HID Prox keyfobs, 50 pack   |
| GOE-PRX-ISO-50PK  | HID Prox ISO cards, 50 pack   |
| GOE-MFC-ISO-50PK  | MIFARE® ISO cards, no magstripe, gloss/gloss, 50 pack   |
| GOE-MFC-ISOM-50PK   | MIFARE® ISO cards, 2750 oe magstripe, gloss/gloss, 50 pack  |
| GOE-MFC-KF-BK-25PK  | MIFARE® keyfobs, piano, black, 25 pack  |
| GOE-MFC-KF-GR-25PK  | MIFARE® keyfobs, piano, green, 25 pack  |
| GOE-MFC-KF-LG-25PK  | MIFARE® keyfobs, epoxy slender, white, goEntry logo, 25 pack  |
| GOE-CP-KF-BK-25PK   | Casi Prox keyfobs, piano, black, 25 pack  |
| GOE-CP-KF-GR-25PK   | Casi Prox keyfobs, piano, green, 25 pack  |
| GOE-CP-KF-LG-25PK   | Casi Prox keyfobs, epoxy slender, white, goEntry logo, 25 pack  |

| Video Storage  |  |
|----------------|--|
| TVR-1004-500   | TVR-10 (TruVision™ DVR 10), 4 channel, 500 GB storage  |
| TVR-1004 -1T   | TVR-10 (TruVision™ DVR 10), 4 channel, 1 TB storage  |
| TVR-3108-1T    | TVR-31 (TruVision™ DVR 31), 8 channel, DVD/CD, 1 TB storage  |
| TVR-3108-2T    | TVR-31 (TruVision™ DVR 31), 8 channel, DVD/CD, 2 TB storage  |
| TVR-3116-2T    | TVR-31 (TruVision™ DVR 31), 16 channel, DVD/CD, 2 TB storage   |
| TVR-3116-4T    | TVR-31 (TruVision™ DVR 31), 16 channel, DVD/CD, 4 TB storage   |
| TVR-3116-6T    | TVR-31 (TruVision™ DVR 31), 16 channel, DVD/CD, 6 TB storage   |
| Cameras        |  |
| Indoor         |  |
| TVD-TIR2-HR    | TruVision™ IR dome camera, 530 TVL color, 3.5-8mm auto iris varifocal lens, 20m IR range, 24VAC/12VDC, IP66, NTSC          |
| TVD-TIR2-MR    | TruVision™ IR dome camera, 480 TVL color, 3.5-8mm auto iris varifocal lens, 20m IR range, 24VAC/12VDC, IP66, NTSC          |
| Outdoor        |  |
| TVC-BIR-HR     | TruVision™ IR bullet camera, 530 TVL color, 6.0mm - 50.0mm auto iris varifocal lens, 55m IR range, 24VAC/12VDC, IP67       |
| TVC-BIR-MR     | TruVision™ IR bullet camera, 480 TVL color, 3.5mm - 12.0mm auto iris varifocal lens, 25m IR range, 24VAC/12VDC, IP67       |
| UVD-XP3DNR-VA2 | UltraView™ XP3 Series true day/night rugged dome, 540 TVL, UTP, BNC, WDR, 2.8mm-10.0mm auto iris IR corrected, 24VAC/12VDC |

[lenel.com/goEntry](http://lenel.com/goEntry)

(866) 788-5095

Specifications subject to change without notice.

© 2012 Lenel Systems International, Inc. All rights reserved. Lenel and OnGuard are registered trademarks of Lenel Systems International, Inc. iPad is a registered trademark of Apple, Inc. All other trademarks and copyrights are the property of their respective owners.

G0E3\_TS\_BS\_080312

