

Prism™ Video Management System

Overview

Lenel's Prism is an open IP video management system (VMS) based on an advanced, intuitive and operator-friendly user interface. Offered in three configurations (standard, professional, and enterprise), and available as a standalone VMS or integrated with OnGuard®, Prism has the scalability, flexibility and reliability to meet your organization's evolving video surveillance needs.

Built using the latest IT and video surveillance industry standards, Prism integrates seamlessly with OnGuard for event-driven monitoring, offering a single point-of-device configuration, event/alarm monitoring & system administration in an integrated video/access deployment. Prism uses the Lenel® NVR as its primary recording engine for deployment on commercial off-the-shelf hardware or optimized and benchmarked turnkey hardware solutions. The combination of OnGuard, Prism and Lenel NVR deliver the industry's leading integrated video/access solution. The feature-rich set of tools that maximizes the use of the video workspace, combined with integration with OnGuard, results in fast, high-quality user decisions, reduced training costs, and more efficient use of personnel.

The release of Prism enables a low TCO (Total Cost of Ownership) video solution. The tiered pricing ensures a cost-effective entry point for those with small and less-complex environments, with simple incremental upgrades as their system size grows. Another tiered pricing upgrade permits integration with OnGuard to deliver a fully-featured integrated experience. Base system licensing covers unlimited use of client and Lenel NVR recorder software. Camera channel licensing applies to overall system capacities, rather than being tied to specific individual cameras. Existing OnGuard Video Manager Software Upgrade & Support Plans (SUSPs) also apply to Prism without any additional costs. Customers will also continue to have a single source of knowledgeable tech support for access control and video from Lenel.



FEATURES

- Open platform for full interoperability/integration
- Video-centric user experience, intuitive UI
- Mixed live & recorded viewing
- Fly-in menus and overlays to optimize space
- Intuitive use of video sequences & timelines
- Advanced forensics tools for investigations
- Highly scalable server architecture
- Single system view of all resources
- High performance event/alarm brokering
- Multiple recording options (high availability and value)
- Extensive support for mixed analog & IP environments
- Integrated video alarm panel



Operator View Features

- Map- & tree-based navigation
- Integrated video alarm panel
- Dynamic timebar
- User definable layouts, sequences & salvos
- Onscreen PTZ and digital zoom controls
- Tile-swap
- Tile maximize & restore with video preview of other tiles
- Tile pop-out
- Layout tear-out
- Navigation & alarm panel tear-out, auto-hide
- Pre/post event loop display
- Snap-shots
- Local recording
- Hot tiles
- Operator-to-operator video routing
- Synchronized recorded playback with live view

Advanced Forensics Tools

Prism simplifies the process of reviewing recorded video with advanced forensics tools:

- **Evidence Locker™** to consolidate multiple data sources for managing and reporting incidents
- **Event Storyboard™** to map out an incident sequentially
- **Filmstrip™** mode for time- and event-based browsing of recorded video
- Post-recording motion search



Recorded Viewing Features

- Multiple recorded viewing and investigation tools
- Recorded video and audio playback
- Simplified video search dialog with query save/edit features
- Independent and synchronized playback of search/query results
- Event browsing with storyboard mode
- Time browsing with filmstrip mode
- Post-recording video motion search
- Evidence locker for snapshots, video clips and user commentary with workflow review
- Video segment track locking
- Video snapshot and video segment local recording
- Snapshot and video export in evidentiary and open video formats

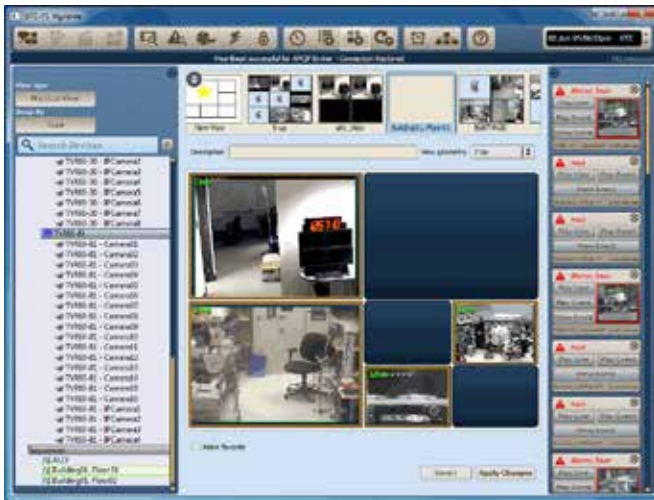
Recorder Options



Prism is tightly integrated with the recently re-factored and modernized Leneel NVR, adopting industry-standard RTP/RTSP transport protocols resulting in high-performance video storage and retrieval. This combination meets your needs whether you prefer to purchase your storage as a software-only package for deployment on COTS server hardware or as benchmarked and optimized hardware-based turnkey solution. Through Leneel NVR, Prism can view and configure hundreds of different models of third-party and Interlogix cameras.

UltraView recorder family running VOS 4.4

Prism also supports VOS 4.4-based storage devices from the UltraView family, which gives many legacy Visiowave/UltraView customers the option to migrate from Video Security Center (VSC) to Prism. In this scenario, replacement or expansion storage could be Leneel NVR-based recorders which would allow Prism video viewing from a mixed VOS/Leneel NVR environment.



Prism System Requirements

Client requirements

- Intel® Core 2™ Quad
- Minimum 2GB of RAM (4GB, recommended)
- (S)ATA hard drive(s)
- XGA or higher video card PCI-Express, with OpenGL hardware acceleration support, minimum 256 MB RAM
- 1024x768 or higher screen resolution
- 10/100/1000 Ethernet Network Interface Card
- CD-ROM drive
- Windows 7 Professional or Ultimate (32 or 64 bit)

Server requirements

- Intel® Xeon® (Dual Core or better, recommended)
- 2 GB RAM (4GB, recommended)
- 250GB HDD
- XGA or higher video card
- 1024x768 or higher screen resolution
- 10/100/1000 Ethernet Network Interface Card
- CD-ROM drive
- Microsoft® Windows® Server 2008 (32 or 64 bit)

Base System Descriptions

	Standard	Professional	Enterprise
Target Customer	Entry-level	Ideal for mid-to-large installations in a campus environment	Designed for mid-to-large installations in distributed environments
Includes	All of the Prism functionality, but with a maximum limit of 32 video channels	1 Prism management server Unlimited use of the LNVR recorder software Unlimited use of the client software <i>Note: no video channel license limit</i>	Multiple Prism management servers can be deployed. These servers will work together in a federated state to provide a single system view of the environment under surveillance. Unlimited use of the LNVR recorder software Unlimited use of the client software <i>Note: no video channel license limit</i>
Video Channels	Purchased Separately	Purchased Separately	Purchased Separately
OnGuard Integration	No (but can be upgraded to Professional or Enterprise Tier products)	Yes	Yes
Upgrade options	Professional	Enterprise	-

lenel.com/Prism

(866) 788-5095

Specifications subject to change without notice.

© 2013 Lenel Systems International, Inc. All rights reserved. Lenel and OnGuard are registered trademarks of Lenel Systems International, Inc. All other trademarks and copyrights are the property of their respective owners.

PR_SS_022513

