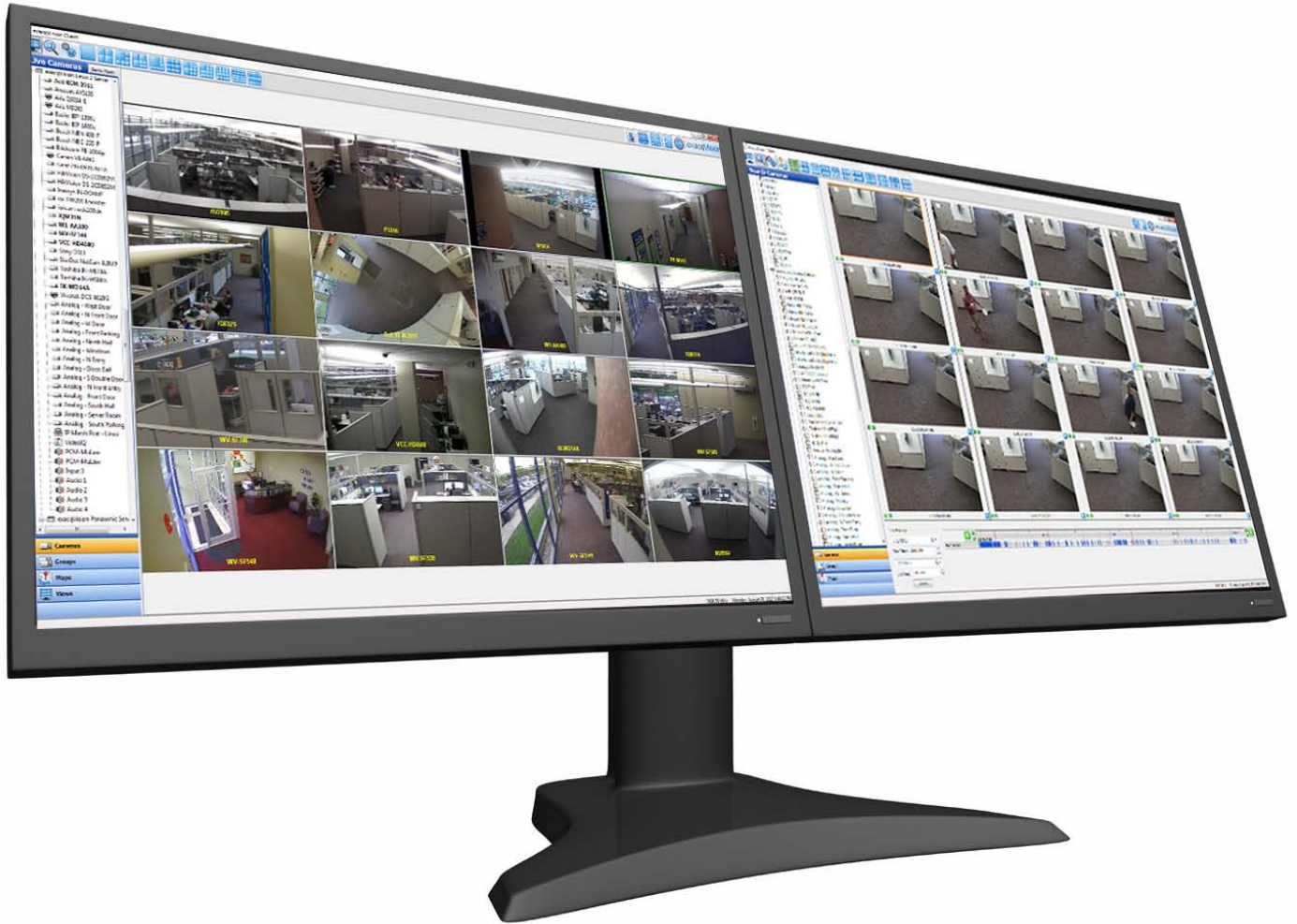


exacqVision®



Cross Platform IP Video Surveillance Software and Servers

Product Brochure (8.5x11)
June 2013



Free Mobile App

Available on iPhone, iPad, Android & Kindle Fire

exacqVision
edge

Now Available:

VMS on an IP Camera

Scalability: Single Camera to Enterprise Installations


exacq
Technologies

www.exacq.com




+1.317.845.5710
+5255.56080817
+44.1438.310163
+44.1438.310163
+852.8120.9275

USA (Corporate Headquarters)
Mexico
United Kingdom
Europe
Hong Kong

 3-year warranty & 3 years SSA on all exacqVision servers	exacqVision EL-Series					exacqVision A-Series			
	IP Camera			Hybrid		IP Camera			Desktop
	EL-toaster	EL-mini	EL-ip	EL-S	EL-SR	Desktop	2U	4U	Desktop
Analog Inputs	0			8/16		0			8/16/32
IP Cameras	up to 16 (exacqVision Start) or 24 (exacqVision Pro)					Up to 64 (data rate dependent)			
Included IP Licenses	0					0			4/8/8
Included VMS Software	exacqVision Start or exacqVision Professional (standard), exacqVision Enterprise Server (optional)					exacqVision Professional (standard), exacqVision Enterprise Server (optional)			
Server OS & Location	Linux Ubuntu 10.04 (kernel 3.0) installed on 4 GB Flash Drive					Windows 7 64-bit or Server 2008 R2 (optional) / Linux Ubuntu 10.04 (kernel 3.0) (standard) 64 GB SSD (optional)			
Analog Compression	N/A			H.264/MJPEG		N/A			
Analog Frame Rate (NTSC)	N/A			240/480		N/A			240/480/960
Analog Frame Rate (PAL)	N/A			200/400		N/A			200/400/800
Max Hard Disk Drives	2	1	2	1	2	2	3	8	2
Max. HD Storage	8 TB	4 TB	8 TB	4TB	8TB	8TB	12TB	32TB	8TB
RAID Configuration	N/A					N/A			RAID-5 Optional
Removable HDD	Yes		Yes		Yes			Yes	
Hot-swappable Drives									
Height (in/cm)	6"/15.24 cm	2.625"/6.7 cm	2.5"/6.4 cm	2.5"/6.4 cm	2.5"/6.4 cm	5.375"/14.6 cm	3.5"/8.9 cm	7"/17.8 cm	5.375"/14.6 cm
Width (in/cm)	4"/10.16 cm	11.375"/28.9 cm	17"/43.2 cm	17"/43.2 cm	17"/43.2 cm	13"/33.1 cm	16.75"/42.6 cm	16.75"/42.6 cm	13"/33.1 cm
Depth (in/cm)	8.5"/21.59 cm	11.875"/30.2 cm	16.25"/41.28 cm	15"/38.1 cm	16.5"/42 cm	15.675"/39.7 cm	21.25"/54.7 cm	28"/71.2 cm	15.625"/39.7 cm
Weight (lbs/kg) Approximate	5.5-9 lbs. 2.5-4.1 kg	7 lbs 3.2 kg	12.5-14.5 lbs 5.7-6.6 kg	11.45 lbs 5.2 kg	12.5-14.5 lbs 5.7-6.6 kg	18.5-22 lbs 8.4-10 kg	27-31 lbs 12.3-14.1 kg	44-60 lbs 20-27.3 kg	18.5-22 lbs 8.4-10 kg
Serial Connections		RS-232 (EL Series only)		RS-485 (PTZ) & RS-232		N/A			
DVD/CD RW	No (USB only)		Optional	Included	Optional	Included			
Keyboard & Mouse		Included				Included			
NIC	2x1Gb					2 (standard), 4 (optional)			
Processor	Intel Dual Core Atom (EL Series) or i3 (ELX Series)					Gen 3 Intel Core i3 (standard), Gen 3 Intel Core i5 (optional)			
RAM	1 GB (EL Series), 2 GB (ELX Series)					4 GB (standard), 8 GB (optional)			
Redundant Power Supply								Optional	
USB Ports	4 (4xUSB 2.0)	6 (6 x USB 2.0)				6 (6 x USB 2.0), 2 (2 x USB 3.0)			6 (6 x USB 2.0)
Display Output	1 VGA	1 DVI-I + 1 VGA (EL Series) or 1 DVI-I (ELX Series)				1 DVI-I + 1 DVI-D + 1 Display port, <u>maximum 2 simultaneous monitors</u>			1 DVI-I + 1 VGA (optional)
Alarm Inputs	0	0	0	4 TTL		0	0	8 (optional)	8 TTL
Alarm Outputs	0	0	0	2 TTL, 1 Relay		0	0	1 (optional)	3 TTL & 1 relay output
Video Outputs	0	0	0	1 spot		0	0	0	1/2/2
Watchdog Timer				Included					
Audio Inputs	0	0	0	4		0	0	4 (optional)	8/16/32
Audio Outputs	0 (USB only)	1 (EL Series), 0 (ELX Series)	1 (EL Series), 0 (ELX Series)	1 (EL Series), 0 (ELX Series)		1	1	1	1

exacqVision Server & Hardware Cheatsheet

(effective June 2013)

Series		exacqVision Z-Series					
Hybrid		IP Camera			Hybrid		3-year warranty & 3 years SSA on all exacqVision servers
2U	4U	2U	3U	4U	2U	4U	
16/32	16/32/48/64	0			16/32	16/32/48/64	
		Up to 128 (data rate dependent)					IP Cameras
8		8					Included IP Licenses
Enterprise Server (optional)		exacqVision Professional (standard), exacqVision Enterprise Server (optional)					Included VMS Software
kernel 3.0) installed on 32 GB SSD		Windows 7 64-bit or Server 2008 R2 (optional) installed on 60 GB SSD / Linux Ubuntu 10.04 (kernel 3.0)					Server OS & Location
H.264/MJPEG		N/A			H.264/MJPEG		Analog Compression
480/960	480/960/1440/1920	N/A			480/960	480/960/1440/1920	Analog Frame Rate (NTSC)
400/800	400/800/1200/1600	N/A			400/800	400/800/1200/1600	Analog Frame Rate (PAL)
3	8	8	16	20	8	20	Max Hard Disk Drives
12TB	32TB	32TB	64TB	80TB	32TB	80TB	Max. HD Storage
N/A	RAID-5 Optional	RAID-5	RAID-6	RAID-6	RAID-5	RAID-6	RAID Configuration
	Yes	Yes					Removable HDD
		Yes					Hot-swappable Drives
3.5"/8.9 cm	7"/17.8 cm	3.5"/8.9 cm	5.5"/14 cm	7"/17.8 cm	3.5"/8.9 cm	7"/17.8 cm	Height (in/cm)
16.75"/42.6 cm	16.75"/42.6 cm	16.875"/42.9 cm	16.875"/42.9 cm	16.875"/42.9 cm	16.875"/42.9 cm	16.875"/42.9 cm	Width (in/cm)
21.5"/54.7 cm	28"/71.2 cm	27"/68.6 cm	26.5"/67.4 cm	27"/68.6 cm	27"/68.6 cm	27"/68.6 cm	Depth (in/cm)
27-31 lbs 12.3-14.1 kg	44-60 lbs 20-27.3 kg	39-53 lbs 17.7-24.1 kg	44-72 lbs 20-32.7 kg	49-90 lbs 22.3-40.9	40-55 lbs 18.2-25 kg	49-90 lbs 22.3-40.9	Weight (lbs/kg) Approximate
2		N/A			1		Serial Connections
		Included					DVD/CD RW
		Included					Keyboard & Mouse
2		2 x 1 Gbps (standard), 4 x 1 Gbps (optional)			2 x 1 Gbps		NIC
5 (optional)		Gen 3 Intel Core i7 (standard), Gen 3 Intel Xeon E3 (optional)					Processor
		8 GB					RAM
	Optional	Yes					Redundant Power Supply
x USB 2.0), 2 (2 x USB 3.0)		8 (8 x USB 2.0)					USB Ports
1 + 1 DVI-D + 1 Display Port, maximum 2 simultaneous monitors		1 DVI-I + 1 DVI-D + 1 Display Port maximum 2 simultaneous monitors			1 DVI-I + 1 DVI-D + 1 Display Port, maximum 2 simultaneous monitors		Display Output
16 TTL	16 TTL	0	8	8	16	16/16/8/8 TTL	Alarm Inputs
15 TTL & 1 relay	15 TTL & 1 relay	0	3 TTL & 1 Relay	3 TTL & 1 Relay	15 TTL & 1 Relay	15/15/1/1 TTL & 1 Relay	Alarm Outputs
2	2/2/4/4	0	0	0	2	2/2/4/4	Video Outputs
Included		Included					Watchdog Timer
4	4/4/48/64	0	4	4	4	4/4/48/64	Audio Inputs
1	1	1	1	1	1	1	Audio Outputs



SOFTWARE FEATURES	exacqVision ^{start}	exacqVision ^{professional}	exacqVision ^{enterprise}	exacqVision ^{edge}
Server OS Compatibility	Windows/Linux	Windows/Linux	Windows/Linux	Camera OS
Free Client Software	Windows/Linux/Mac	Windows/Linux/Mac	Windows/Linux/Mac	Windows/Linux/Mac
Supported Browsers	IE, Chrome, Safari, Opera, Firefox	IE, Chrome, Safari, Opera, Firefox	IE, Chrome, Safari, Opera, Firefox	IE, Chrome, Safari, Opera, Firefox
Max Cameras Per Server	16 Analog / 16 IP	64 Analog / 128 IP	64 Analog / 128 IP	1 IP Camera or Encoder
Max Server Connections Per Client	1	512 (thick client) / 16 (web client)	512 (thick client) / 16 (web client)	512 (thick client) / 16 (web client)
Bandwidth Throttling	Yes	Yes	Yes	Yes
Pre-Post Alarm Recording	Yes	Yes	Yes	Yes
Panoramac Lens Support	Yes	Yes	Yes	Camera Dependent
Video Expiration	Max retention, global	Min/Max retention by camera	Min/Max retention by camera	Min/Max retention by camera
iSCSI Support		Yes	Yes	
NAS Support (OS Dependent)				Yes
Time-Lapse Recording		Yes	Yes	Yes
exacqVision Surveillance Keyboard Support		Yes	Yes	Yes
3rd Party Client Joystick Configuration		Yes	Yes	Yes
Soft Triggers		Yes	Yes	Yes
Audit Trail		Yes	Yes	Yes
Custom User Groups		Yes	Yes	Yes
3rd Party Integrations	Command Line	Yes	Yes	Yes
Installs to IP Edge Device				Yes
PTZ Control & Presets	Yes	Yes	Yes	Yes
Digital PTZ Control & Presets	Yes	Yes	Yes	Yes
Multi-Monitor & Video Wall	Yes	Yes	Yes	Yes
Event Linking	Discrete Inputs Only	Yes	Yes	Yes
Event-Driven Video Switching		Yes	Yes	Yes
Camera Groups		Yes	Yes	Yes
Multistreaming		Yes	Yes	Yes
Event Notifications		Yes	Yes	Yes
Maps		Single-layer	Multi-layer	Multi-layer
Multi-Camera Playback	Yes	Yes	Yes	Yes
Simultaneous Video Export		Yes	Yes	Yes
Thumbnail & Graphic Search Display	Yes	Yes	Yes	Yes
Event Search	Yes	Yes	Yes	Yes
POS & ATM Serial Text Search	Yes	Yes	Yes	Yes
DVD Export	Yes	Yes	Yes	Yes
Auto Export	Yes	Yes	Yes	Yes
exacqReplay Instant Replay	Yes	Yes	Yes	Yes
Smart Search		Yes	Yes	Yes
Enterprise Cameras			Yes	Yes
Enterprise Server Monitoring			Yes	Yes
Enterprise User Setup			Yes	Yes
LDAP / Active Directory			Yes	Yes
Health Monitoring		E-mail	Enterprise Health Monitor option / email	Yes
Software Updates Included (exacqVision Servers)	3 Years	3 Years	3 Years	3 Years
Software Updates Included (3rd Party Servers)	90 Days	1 Year	1 Year	
Upgradeable to Next Tier	Yes	Yes		



IP Cameras














Access Control

















Video Analytics









The latest Network Integration Partner list is available at www.exacq.com/support/ipcams.php